

ARCHITECTURAL INTERVENTIONS: A CASE STUDY OF HERITAGE ZONE IN KOTA BHARU, KELANTAN.

YASMIN BINTI MOHD FAUZI *

JULIZA BINTI MOHAMAD **

Abstrak

Kelantan terletak dalam pengasingan dari koridor perindustrian di pantai barat dan jauh dari pengaruh Kuala Lumpur, Pulau Pinang dan Singapura. Adalah penting untuk menentukan daya-daya penentu pertumbuhan bandar di negeri ini kerana pusat-pusat bandar di Kelantan mempunyai gabungan unik antara potensi dan kekangan. Walau bagaimanapun, sebagaimana proses globalisasi dan urbanisasi perbandaran yang berlaku di seluruh dunia, evolusi senibina di Kelantan tidak terkecuali dan pemeliharaan nilai-nilai sejarah yang unik perlu dilakukan. Warisan senibina Kelantan hari ini kurang dihargai oleh masyarakat kerana karaktornya yang terpencil dan kurang baik. Hal ini kerana proses pengekalan bangunan warisan kurang diberi perhatian dan juga kurang mendapat penekanan daripada pihak berkuasa dan masyarakat sendiri. Terdapat banyak bangunan-bangunan bersejarah di Kota Bharu yang telah dirobohkan untuk tujuan pembangunan bandar dan ada sebahagian bangunan diberi pengaruh gaya seni bina moden dan kontemporari tanpa mengambil kira nilai sejarah yang sedia ada. Pertumbuhan intervensi senibina adalah tidak dapat dielakkan atas permintaan untuk memenuhi keperluan perbandaran. Akibatnya, corak persekitaran bandar dan warisan senibina ini mengalami perubahan sepanjang proses pembandaran. Selain itu, perubahan telah memberi kesan kepada suasana persekitaran iaitu bangunan (warisan alam bina), serta perancangan jalan dan aktiviti.

Kata kunci: Warisan Alam Bina; Intervensi Senibina.

* Pelajar Sarjana di Fakulti Teknologi Kreatif dan Warisan, Universiti Malaysia Kelantan

** Pensyarah di Fakulti Teknologi Kreatif dan Warisan, Universiti Malaysia Kelantan

Abstract

Kelantan is situated somewhat in isolation from the industrial corridor of the west coast and far from the sphere of influence of Kuala Lumpur, Penang and Singapore. It is important to determine the forces of the state's urban growth determinants because urban centers in Kelantan have their unique mix of potentials and constraints. However, as far as globalization and urbanization that are taking place worldwide, the architectural evolution in Kelantan is not exempted and the preservation of any unique historical value should be done. The heritage architecture value of Kelantan today, has not been appreciated by local folks and society because of its isolated and poor characters which has not been maintained and well emphasized by the authority and society themselves. Hence, the remarkable heritage property has been 'invisible' and demolished due to negligence and time factors. Moreover, there are many historical buildings in Kota Bharu that had been demolished for urban development purposes and the influence of modern and contemporary architecture style without considering the existing and distinctive of historical value. The growth of architectural intervention is inevitably due to society and its demands to fulfill their urban needs nowadays. As a result, the pattern of urban setting and heritage property had changed throughout the years of urbanization. Moreover, the changes have affected the ambiance of surrounding i.e. buildings (built-heritage), and streets planning and activities.

Keywords: Built Heritage; Architectural Intervention.

* Pelajar Sarjana di Fakulti Teknologi Kreatif dan Warisan, Universiti Malaysia Kelantan

** Pensyarah di Fakulti Teknologi Kreatif dan Warisan, Universiti Malaysia Kelantan

1.0 Introduction

Kelantan is one of the most historical states in Peninsular Malaysia. It is situated in the north-east coast of Peninsular Malaysia facing the South China Sea and covers a land of area of 14,922 sq km. The prominent of heritage and cultural value of Kelantan is arguable among the states in Malaysia. Kota Bharu, which is the state capital, is a bustling developed and historical township well connected to other major towns in Malaysia that serves as the centre for Kelantan's administrative and business activities as well as tourist attraction. The name means 'new city' or 'new castle/fort' in Malay. Kota Bharu is situated in the northeastern part of Peninsular Malaysia, and lies near the mouth of Kelantan River. In 2005, it had an estimated population of 425,294 making it the largest town on the east coast of Peninsular Malaysia.

The capital of Kelantan previously known as Kota Saba located near 'Tambatan Diraja' along the riverside of 'Sungai Kelantan'. In 1844, Al-Marhum Sultan Muhammad II (Long Senik b. Long Tan) had removed the palace to the east part of the land area because of a flood situation. He then declared the new constitution area as Kota Bharu.

Urban development of Kota Bharu, as a capital of Kelantan as a new developed township has given some effects to the urban setting and urban fabric of the town itself. On the other hand, the originality of the historic city of Kelantan had slowly been disappeared due to extensive urban architectural growth. Crucially, the urban heritage sustainability has been neglected by society and future generation.

The development of conservation principles in the second half of the 20th century had been regarded by many as the most significant achievement of conservation activity internationally. These principles or guidelines, promulgated either as charters, recommendations, resolutions, declarations or statements, were drafted and adopted mainly by international organizations, such as UNESCO and ICOMOS, with the main objective of protecting cultural property, which includes historical monuments, buildings, group of buildings, sites and towns around the globe, against various threats (Ahmad, 2006).

Hicran T (2006) points out that it is clear that the identity of an urban context is not only composed by the sum of the elements which constitutes it, but also through the visible and invisible ties that bring them together through a complex system of relationships which is reflected as different qualities in different scales. Thus, the conservation, in its widest sense including both the change and the continuity in a realistic balance, should be based on the complete awareness of that context, and all kinds of variables contributing in its formation.

The development of historic preservation as a professional field has, to some extent, created a divide between the discipline of preservation and the practice of architecture (Sotoudeh & Wan Abdullah, 2012).

2.0 Background of Study

Workskett, (1970) asserts: “The qualities we inherited from the past can become a discipline for change today. A town’s past, its present and its future must combine to create a recognizable unit, so that its growth can be seen and felt to be continuous.”

The changes of urban setting including buildings form and character, street’s planning and other interventions due to urban architecture growth and globalization are imperative in developing and preserving the historical place making, buildings and local culture for future generation. Excessive growth of society and its current demands, plus the existing physical setting could not fulfill the necessities of the changing society, alteration becomes an essential need, and seems to conflict with the preservation. On the other hand, it is not the alteration but the momentum and the scale of it what threatens the need for continuity. Additionally, the act of conservation requires change or alteration to some extent, if it is “the process of preserving something in being, of keeping something alive” (Cantacuzino, 1989).

According to Sotoudeh & Wan Abdullah (2012), in the field of architectural design for new developing in historic context when designing adding within a historic context, it is important to understand the design principles that gave rise to the existing conditions. New building's appearance and its relationship to its surroundings is a serious design problem that has become a significant issue in many places. As Sotoudeh & Wan Abdullah (2012) found that the main goal of conservation is to enliven cultural properties by evaluating their architectural, historical, environmental, visual and aesthetic characteristics.

Moreover, heritage and historic settings have always been a major problem in the preservation field. There have been many arguments about the appropriate way to come close to a historic context when it is in need of urban development to produce more functional building for a new or expanding utilize and needs. As asserted by Sotoudeh & Wan Abdullah (2012), “In the postwar period, an important issue for preservation has been defined as how new construction might appropriately support and enhance, rather than detract from, historic buildings and districts under regulatory protection”.

Dr. Lim Mah Hui (2012), in his speech he says that, “It is convenient to justify what is happening in the name of development. As I said last year, we must be more thoughtful. We must ask the following questions:”

- What kind of development do we want?
- Is it development that destroys our heritage and culture?
- Is it sustainable development?
- Is it green development or development that aggravates climate change?
- Who benefits most from this development?
- Who loses out in this process?

- Is it development for the top 1% or development for the 99%?

Therefore, the construction of new buildings within historic districts or areas contains a significant number of historic buildings that is often a difficult design problem. The demands of new construction and building programs often make it difficult for new building to fit in a sympathetic manner with the existing urban fabric (Sotoudeh & Wan Abdullah, 2012). The quality of views and vistas of existing heritage buildings have been taken for granted by their poor safeguarding and maintenance.

According to Rui (2008), "In modern times, sustainable development is a significant goal in urban planning, and it is considered that urban heritage conservation is an important content in sustainable development. Facts show that taking diversified methods for conservation, renewing selectively with the banishing of total renewal, and endowing urban heritage with new use are effective means for realizing sustainable development".

Sotoudeh & Wan Abdullah (2012) state that, "In general, when additions or new construction are proposed for historical settings of great value, they should be designed in such a way that the new construction is distinguishable from the historic fabric by informed observers or trained professionals but is otherwise continuous in character with the historic setting".

Semes (2009) also states, "Adding that which may be valued in the future is vital to sustaining cultural values in the historic environment"

3.0 Architectural Intervention

"Architecture is the masterly, correct and magnificent play of masses brought together in light." Le Corbusier.

Architecture shall be defined in various means which rely on subjective view and perspectives. Definition of "Architecture" In Oxford Dictionaries Online, (Sept 14th, 2103) "The art or practice of designing and constructing buildings, the complex or carefully designed structure of something".

As mentioned by prominent American architect, Holl. S, (2013) he points out that, "While artists work from the real to the abstract, architects must work from the abstract to the real. While art may legitimize itself as an object or an event, architecture dissolves into a blur of buildings. Architecture, under all of its constraints of engineering safety, function, climate responsibility and economy, sometimes transcends to inspire us with ideas in space and light"

"Intervention" in Oxford Dictionaries Online, (Sept 14th, 2013), "The action or process of intervening".

Thus, the research engages the study of architectural interventions which consist of the intervening process of the buildings (heritage zone) by means of physical and visual changes, alterations, renovations, and demolition process due to urban needs and development of the study area.

4.0 Architectural interventions concept

The alterations and changes of building massing due to urban growth and urban needs in Malaysia is a vital issue nowadays. Hamilton & Zuraini Md Ali (2002) point out that, there are some of heritage buildings that are being threatened because of destruction of the original owner and demolished the insistence of development and lack of concern for the community in an effort to preserve the heritage building.

According to Rubió. I (1985), “The relationship between new architectural intervention and already existing architecture is a phenomenon that changes in relation to cultural values attributed both to the meaning of historic architecture and to the intentions of the new intervention” He adds, “Hence, it is enormous mistake to think that one can lay down a permanent doctrine or still less a scientific definition of architecture intervention. On the contrary, it is only by understanding in each case the conceptions on the basis of which action has been taken that it is possible to make out the different characteristics which this relationship has assumed over the course of time”.

The development and evolution of architectural interventions rely upon human’s demand in urban context due to globalization. Paillard C (2006) says that, “The urban fabric is not immortal and buildings can become obsolete in term of structure and functionality, sometimes within 30 year”. The formation of new architectural interventions towards existing urban fabric shall be significant in creating and sustaining the originality and essence of heritage ambiance. Palen (1995:92) says that, “It is increasingly being recognised that the outer cities are not an aberrational form, or an extension of, the old core-periphery model. Rather, outer cities represent a new organisational model.”

According to Najafi (2011), “It is obvious that urban planners deal with the allocation of resources for future needs and architects just pay attention to the information on the basis of which single constructions can be built”. Barnett (1982) asserts that, “There is a substantial middle ground between these two professions which cannot be filled by either one completely”. Consequently as added by Beckley (1986), “Urban design is a bridge between urban planning and architecture”. Shirvani (1990) points out that “It is a part of the process of planning which deals with the environmental physical quality”.

The architectural interventions however, have been argued to fulfill human and authority requirements in achieving urban lifestyle parallel to current development. Abidin. N and Jaapar. A (2008) state that



buildings and structures enabled mankind to meet their social needs for shelter, to meet economic needs for investment and to satisfy corporate objectives. It changes people's lifestyle, improves people's standard of living and modernises a community.

Architectural interventions comprise the involvement of urban setting of a city, construction, conservation, renovation or refurbishment of buildings form and character, street's morphology and planning and also natural and man-made features. Solà-Morales i Rubió (1985) claims that the relationship between a new architectural intervention and already existing architecture is a phenomenon that changes in relation to the cultural values attributed both to the meaning of historic architecture and to the intentions of the new intervention.

Urban heritage cannot only be defined for a monument, religious buildings, palaces, castles, fortress and other types of historical building. The definition of urban heritage includes historical residential areas and historic city centre and also even be non-tangible elements of urban heritage, for instance, customs and beliefs, which play role for the articulation of space use and the built environment (Steinberg, 1996). A better and more comprehensive definition of urban heritage is offered by Logan.W (2004), urban heritage can be defined in various ways, though most usually it refers to the features in the built environment that are deemed worthy of protection. But the notion of 'heritage' has changed considerably over the last half century – and so, too, has the idea of 'urban heritage'. Urban heritage can now be defined as including other legacies from the past that makes a town or city distinctive, such as the arts and crafts shared by the community, or the rituals, ceremonies and festivals shared by a community.

A critical issue facing the distinctive historical town is rapid urban development that has demolished the urban heritage value. McDonald.S (2011) states that change, however, is inevitable. Buildings, streetscapes, and urban areas evolve and change according to the needs of their inhabitants. Hence, it is essential to determine the role of architecture intervention in contributing to this change in ways that preserve the special character and quality of the historic environment that communities have recognized as important and wish to conserve for future generations.

Architecture interventions that comprise of urban form and planning, building massing and architectural style development, and street's layout and activities are major catalysts in creating superior city form. However, the advancement shall create massive impacts to the urban setting context, streets' pattern as the main networking system, urban structure and activities, and also the significant of architecture style which portray the identity and image of that surrounding area. Therefore, it is crucial to determine the implication of sustaining the heritage elements into urban growth or vice versa. It is because those could give consequences to the heritage value, urban growth, authority and society themselves in order to understand their distinctive identity which could not be replaced by others.

5.0 Factors contribute to the architectural interventions

Rapid growth and urbanization in Malaysia particularly has put the heritage in an endangered situation, which might cause demolition of historical value of the area. As mentioned by Badaruddin. M, Dr. A. Ghafar. A and Nurwati. B (2008), heritage cities in the developing nations including Malaysia, currently face intensified urban problems as a result of rapid population growth, economic development, and urbanization. According to the Getty Conservation Institute (2009), over the last decade, the urban conservation challenge has grown critical due to rapid urbanization and the resulting growth and transformation of cities worldwide. Conserving historic urban environments is currently one of the most universally urgent and challenging cultural heritage conservation issues.

6.0 Architectural interventions of building massing

As globalization and vibrant development become a major catalyst in creating a world-class city, massive development is inevitable. Architectural interventions as one of the main factors in designing the urban landscape of the city, which might give impact to the existing urban fabric and preservation of historical sites. According to Whangarei District Plan (2012), inappropriate development and redevelopment in close proximity to heritage buildings, sites and objects can have potential adverse effects on heritage values and surrounding amenity. As appointed by Hicra. T (1994), as the society and its demands grow rapidly, and the existing physical setting cannot fulfill the requirements of the changing society, change becomes a need, and seems to conflict with the preservation.

In recent days, the increasing of architectural interventions through building massing growth and other urban landscape elements which rely on the society needs and demand for their urban life style. This has put the awareness of the preservation of existing heritage in a minor priority in their daily life. As stressed by P.G. Bardelli a, A. Guagnini (2007), current problems relating to the architectural world are clearly related to the preservation and restoration of the existing architectural heritage.

As appointed by Badaruddin. M, Dr. A. Ghafar. A and Nurwati. B (2008), recent development in the global scene has posed many implications on the future of historic cities in many developed and developing nations. Population-driven development pressures, bureaucratic red-tapes, environmental degradations and other pressing urban issues have all conspired against much hopes and anticipations for a solemn recognition and establishment of the historic cities as national pride and treasure, to be maintained and cherished to posterity. As mentioned by Robiah Abdul.R and A. Ghafar. A, (2008), it is up to present date that many historical buildings have been sacrificed just for the sake of letting way to new developments. Besides the demolition of these historical buildings, a large number of the historical buildings are also left in a bad state of decay.

Besides, urban life pattern such as lifestyle, environmental aspects, and transportation system are other



significant subjects in causing the raise of architectural interventions and urban growth of the area. As stated by Badaruddin. M, Dr. A. Ghafar. A and Nurwati. B (2008), the ramifications for such urban problems go beyond the spatial dimension of city planning on other issues including the quality of life, environmental concerns, changing urban lifestyles, production and consumption patterns, access and mobility, transportation systems and impact on urban heritage. It appears that our heritage cities are facing a crisis in the wake of a new era.

Moreover, the factor of consumption patterns of city dwellers itself as well as lifestyle shall trigger the needs of current interventions in order to fulfill their modern way of life. Majority of the urban dwellers require up-to-date residential and housing rather than spending their daily basis life in a traditional wooden house. This issues has been agreed by Badaruddin. M, A. Ghafar. A and Nurwati. B (2008), factors of demographic changes, over-consumerism, changing lifestyles and consumption patterns amongst the city dwellers have imposed a major turnabout in the way of life in heritage cities. Many young urban professionals admit that living in a heritage inner city is boring. They prefer condominium living with air-conditioners, rather than staying in a shop house with air-well ventilation. They also prefer Starbucks's coffee to traditional coffee shop at the corner. Wet market and sundry shops are fast losing customers to big supermarkets. All these changes of modern society have affected the rhythm and pulse of heritage cities. Also, as cited by Hicran. T (1996), the houses on the street which are designed according to the standard needs of their users in the time of their construction, do not satisfy the needs of their current users. Therefore, various interventions have been realized in order to adapt the buildings into current conditions and requirements.

Public awareness plays an important role in developing the city as well as conserving the intrinsic historical assets. The significance of colonial buildings in heritage zones in Malaysia somehow been argued by numbers of society as the buildings is reflecting dark period in Malaysian history. With this point of view, some claim that glorifying the buildings as a new colonialism, causing them in exception of conservation efforts. Additionally, the lack effort by the government side to alert and educate the public on the value of the heritage buildings to the new generations is one of the factors contribute to the poor awareness of the society (Badaruddin. M, Dr. A. Ghafar. A and Nurwati. B, 2008).

The young generations today are taking for granted the glorious history of the heritage area as it is an essential element in forming the country from the very beginning. As cited by Akiko. K, Primitivo. C, Koichi. A, Hussein S. L., (2005), history can provide valuable information and lessons on the interplay of factors that shape urban growth and development.

Further, the role of particular committee who are responsible in creating the urban fabric of the country such as urban designer, architects, urban planner, contractors and others shall put their obligation and step in conservation and sustaining the heritage buildings. Shirvani (1990) said that although the respon-

sibility of urban design is to design the physical and spatial design of the built environment, there are two perspectives in regard to the realm of its intervention, one of the roles of urban design is the creator and the other one is urban design as the guide of urban environment and not its creator.

Likewise, the factor of mother-nature and time that affects the existing building massing in the heritage zone particularly have also influenced the architectural interventions by means of alterations and modifications of the heritage buildings. As said by Tony B. (2011), over the life of the building its physical condition can deteriorate significantly, e.g. due to the effect of the weather or day-to-day wear and tear, and this can have a significant impact on the ability of the building to meet the expectations of the occupants. This deterioration can be arrested through maintenance and repair, and most building owners or occupiers undertake general maintenance and repairs on their properties.

7.0 Case Study: Heritage Zone in Kota Bharu, Kelantan

Kota Bharu was officially opened in 1844 by Sultan Muhammad II as the new capital of Kelantan to replace Saba city that was no longer fit to serve as the administrative center of the state as it was often threatened by flood. It was called "Kota Bharu" in conjunction with the opening of the new city by the king. However, not long after that, Istana Kota Bharu was renamed the 'Istana Balai Besar' so that to avoid confusion arising between place names and also the name of a castle. Since then, Kota Bharu has experienced rapid urbanization process and become the foundation of the population. Today, Kota Bharu has emerged as the largest port on the East Coast of Malaysia with a population of 491,237 people (effeminate 2010). The origin residence of Kota Bharu is well known for their unique culture and language. Thus, on July 25, 1991, the capital of Kelantan has been declared as the city of culture by His Royal Highness the Sultan of Kelantan. While on October 1, 2005, the capital of Kelantan has been declared as an Islamic city with the title of "Kota Bharu Bandar Raya Islam

8.0 Urban morphology of Kota Bharu

The capital of Kelantan was previously known as Kota Saba loacted near 'Tambatan Diraja' along the riverside of 'Sungai Kelantan'. In 1844, Al-Marhum Sultan Muhammad II (Long Senik b. Long Tan) had removed the palace to the east part of the land area because of flood situation. He then declared the new constitution area as Kota Bharu.



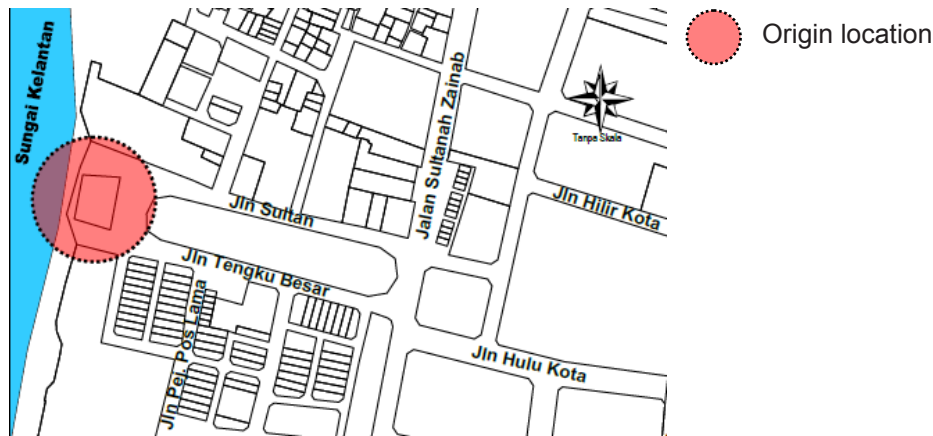


Figure 1. The origin location spot of Kota Bharu town at the riverside of Sungai Kelantan.
(Source: MPKB, AJM – PUDG (2005))

In 1902, Kota Bharu was protected under Thailand government with British as an official advisor. There were massive changes and development as there were many administration buildings being built concurrently near the palace's area within 7 years' period.

On 1 October 2005, Kota Bharu was declared Kota Bharu, The Islamic City. This title is given to the city which observes Islamic principles in every aspect of daily life. The Azan (prayer call), can be heard everywhere, even in shopping malls. All activities in the city must be stopped for a while to respect the Azan as illustrated in Figure 1.

In the years of 1844 to 1900 the growth of palaces and administration buildings were evolved from the origin location of 'Tambatan Diraja' as an urban generator of that area. The residential and town community area then grew concurrently near the adjacent developed area. The central market and commercial premises as an economic generator have fulfilled the needs and necessity of town community. The development of the town has started along the riverside as shown in Figure 2.

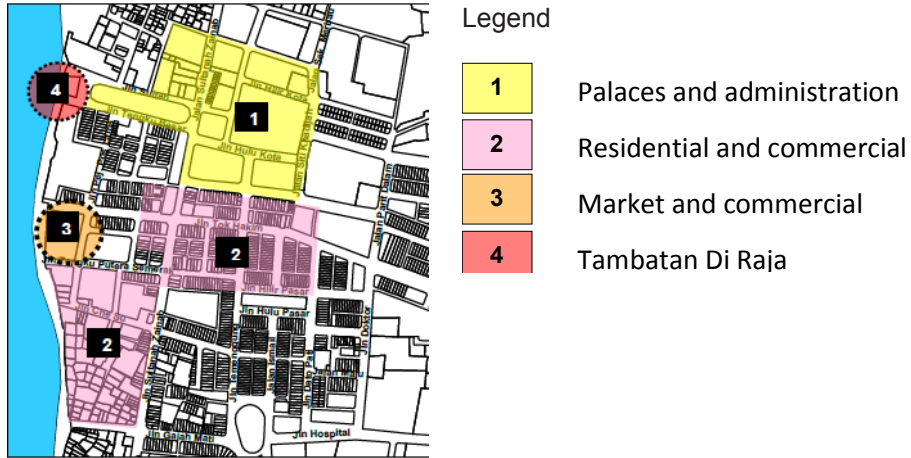


Figure2: Development Kota Bharu in 1844-1900
(Source: MPKB, AJM – PUDG (2005))

In 1903 to 1910 the government offices were gradually developed in a bigger area around the administration zone with State Secretary Office (SUK) as the main administration office. The growth of residential area was concurrently being developed along the active zone of development with the central market as the main commercial area as shown in Figure 3.

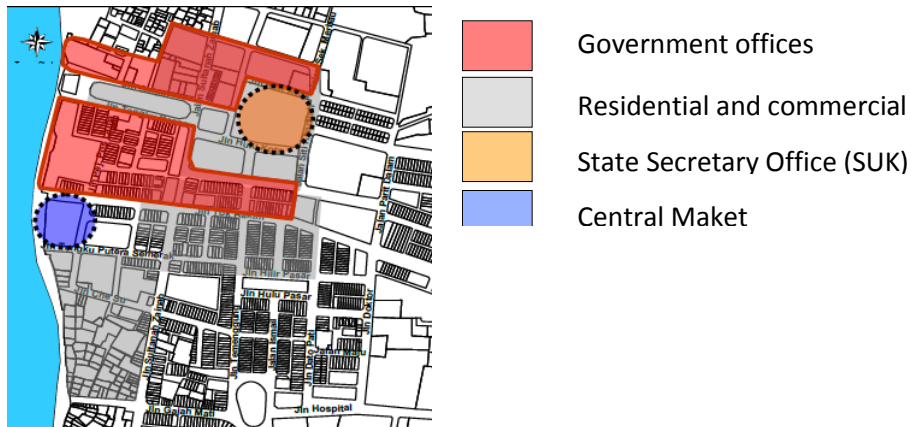


Figure 3 . Development Kota Bharu in 1903-1910
(Source: MPKB, AJM – PUDG (2005))

In 1910, Thailand surrendered Kota Bharu to the British government under 'Perjanjian Inggeris-Siam'. Kota Bharu had gradually grown in the area of Jalan Padang Garong, Jalan Hilir Pasar dan Jalan Hulu Pasar where the MPKB bazaar is now located (currently had been demolished by the authority). The urban development of Kota Bharu was developed covering the commercial area to the General Hospital of Kota Bharu.

9.0 Heritage zone and buildings in Kota Bharu

The evolution and growth of urban setting and development have generated the emergence of building massing with architecture influenced by that era. Rapid growth of commercial area generates the interventions of building massing constructed along the active street areas such as Jalan Temenggong, Jalan Ismail, Jalan Dato' Pati, Jalan Hilir Pasar, Jalan Hulu Pasar and Jalan Tok Hakim as an economic generator to the developed Kota Bharu township as illustrated in Figure 5.

Based on the inventory of heritage buildings and monuments by 'Badan Warisan Malaysia', there are 247 buildings and 11 units of shophouses of pre-war buildings in the city center of Kota Bharu. Most of the clustered heritage buildings consist of shophouses concentrated in Jalan Temenggong (28.7%), Jalan Ismail (14.7%), Jalan Dato Pati (13.6), Jalan Hilir Pasar (13.2%) and Jalan Hulu Pasar (7.8). For scattered heritage buildings, they are more concentrated in the area around the palace (2.7%). Distributions of other heritage buildings are listed in Table 1 as well as in Figure 4 and Figure 5. (MPKB, Kaji selidik Guna Tanah APUDG, 2005)

Table 1: Distribution of heritage buildings in Kota Bharu
(Source: i. Pemeliharaan Warisan Rupa Bandar
ii. MPKB, Kaji selidik Guna Tanah APUDG, 2005)

Nama Jalan	Bil	%
Jalan Dato Pati	35	13.6
Jalan Hilir Pasar	34	13.2
Jalan Hulu Pasar	20	7.8
Jalan Ismail	38	14.7
Jalan Pendek	12	4.7
Jalan Suara Muda	11	4.3
Jalan Temenggong	74	28.7
Jalan Tengku Putera Semerak	13	5.0
Jalan Tok Hakim	10	3.9
Zon Warisan	7	2.7
Jalan Sultan Ibrahim	1	0.4
Jalan Sultanah Zainab	1	0.4
Jalan Hospital	2	0.8
Jumlah	258	100.0

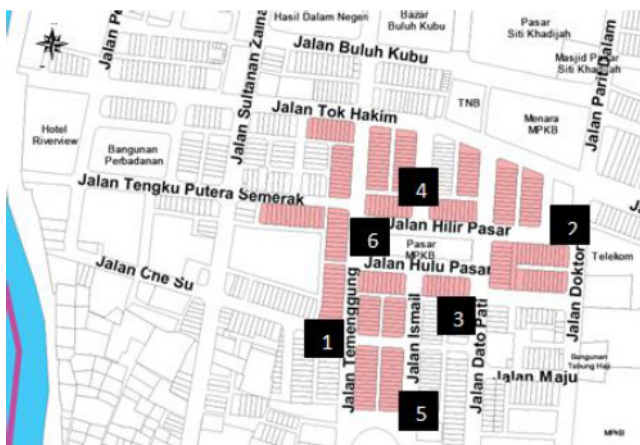


Figure 4: Distribution of heritage buildings in Kota Bharu
(Source: MPKB, Kaji selidik Guna Tanah APUDG, 2005)



Figure 5 : Buildings at Heritage Zone in Kota Bharu
(Source: i. MPKB, Kaji selidik Guna Tanah APUDG, 2005
ii. Muhammad Ismail Ibrahim, The Kelantan Times, 2011
iii. shw.raykinzoku.fotopages.com)



Figure 6: Among the heritage building with variation of architecture style along Jalan Ismail, Kota Bharu, Kelantan

(Source: MPKB, Kaji selidik Guna Tanah APUDG, 2005)

Many of the shop house buildings in Kota Bharu were constructed before war, in the 1940s. The buildings are categorized in Early Transition Era of architecture. Scattered heritage buildings are constructed in the 1880s. Most of the shop house buildings are influenced by 'Eclectic' architecture style which is a hybrid of architectural styles of English, Malay, Chinese and Thai as indicated in Figure 6, Figure 7, Figure 8 and Figure 9. The visibility of Western influences can be seen on the building design with combination of eastern motif carvings especially on the openings and fenestration system. The fusion of these architecture styles creates an attractive architectural uniqueness and become a potential integral element of urban design. (MPKB, Kaji selidik Guna Tanah APUDG, 2005)



Figure 7 : View of Jalan Temenggong in 1927.

(Source: Muhammad Ismail Ibrahim, The Kelantan Times, 2011.)

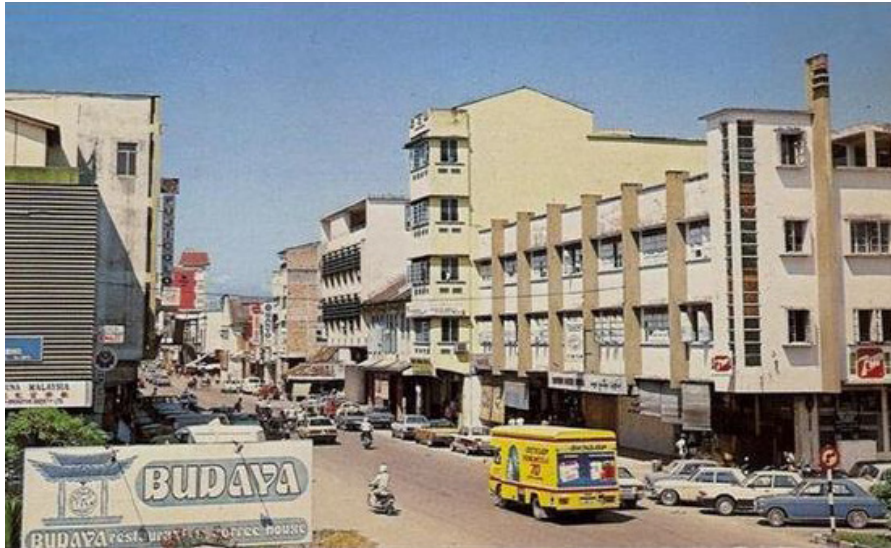


Figure 8 : View of Jalan Temenggong in 1980's
 (Source: Muhammad Ismail Ibrahim, The Kelantan Times, 2011.)



Figure 9: View of Jalan Temenggong in 2011
 (Source: Muhammad Ismail Ibrahim, The Kelantan Times, 2011)



Figure 10 (on the right): View of shop houses Jalan Hilir Pasar in 1940's.

Figure 11 (on the left): View of shop houses along Jalan Hilir Pasar in 2011.

(Source: Muhammad Ismail Ibrahim, The Kelantan Times)

The existence of the heritage buildings in the city center of Kota Bharu nowadays shows the fame of historical city of Kota Bharu in few decades. The architectural interventions of the building have created valuable 'streetscape', particularly in Heritage Zone, Jalan Temenggong and 'Jalan Hilir Pasar'. It is an asset that can be highlighted as an attractive image of the old city, giving the city the appearance of a pattern of very high value in terms of heritage aesthetics as indicated in Figure 10.

10.0 Effects of architectural interventions on urban setting in Kota Bharu, Kelantan

As time passed, urban growth and development has inevitably happened to the area of high potential developed area like Kota Bharu itself. It occurs due to the needs and demand of the society to fulfill their urban needs and necessities as well as worldwide development issues. As stated by Jaafar.J (2004), urbanization and urban growth are phenomena of increasing concern to both planners and policy makers alike since trends and patterns of urbanization have wide ranging implications on socio-economic development. Mohamed.B, Ahmad A.G, and Badarulzaman. (2001) note that recent development in the global scene has posed many implications on the future of historic cities in many developed and developing nations. The architectural interventions consist of modifications and change of building massing feature. The intrinsic of heritage value slowly faded away due to time and lack of conservation awareness of the historical elements. Thus, the ignorance of heritage worth shall become an enormous issue as urban development took place as a dominant approach towards urban development of the study area. Poor maintenance and safeguarding of heritage building affects the image of historical city as well as unsuccessful placemaking of heritage town. Mohamed.B, Ahmad A.G, and Badarulzaman (2001) point out that historic buildings usually provide significant physical characteristics to a city. They build a lucid image and distinct identity of a heritage city which differentiates it from other regular cities elsewhere.

11.0 Effects of architectural interventions and negligence on building massing

Nevertheless, currently the heritage features of the buildings are not properly cared of and have been neglected by the owner and community. Some of the facades of the heritage buildings have been altered and blocked with inappropriate oversized billboards which affect the originality and significance of heritage elements. Hence, modification and unnecessary intervention should be controlled in order to sustain and preserve the originality of heritage components as well as to maintain the attractive streetscape.

Based on result of evaluation on the criteria set by the Malaysian Heritage (Badan Warisan Malaysia), heritage buildings in the heart of Kota Bharu can be classified according to the Table 2.

Table 2: Classification of heritage building in Kota Bharu

Grade 1	Building of great historical and high architectural value. The significance of this building could not be compared and cannot be left without any action to preserve for more specific maintenance actions. Buildings in this category cannot be demolished and conservation can only be made through a particular conservation method.
Grade 2	Modifications of the building with control of the situation. Modification is usually done on the facade elements such as doors and windows.
Grade 3	Almost the entire building has been made modifications without emphasizing on the features and benefits of the original building

In total, there are 12 units (5%) grade 1 buildings, 194 units (75%) grade 2 and 51 units (20%) grade 3. Modification and placement of signs on the building should be controlled to ensure that the buildings are not losing the aesthetic value and streetscape character should be highlighted in interesting ways to improve the image and heritage significance of downtown Kota Bharu as illustrated in Figure 12, Figure 13, Figure 14 and Figure 15.

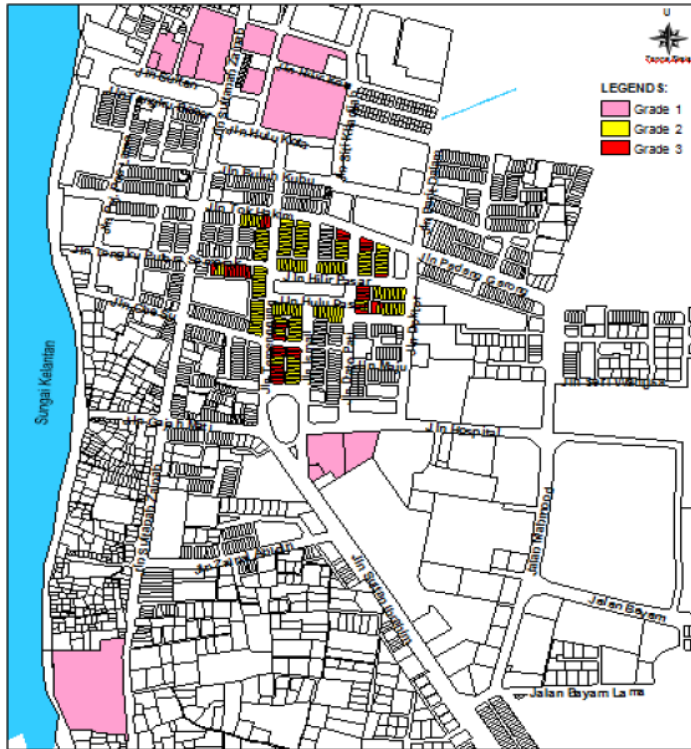
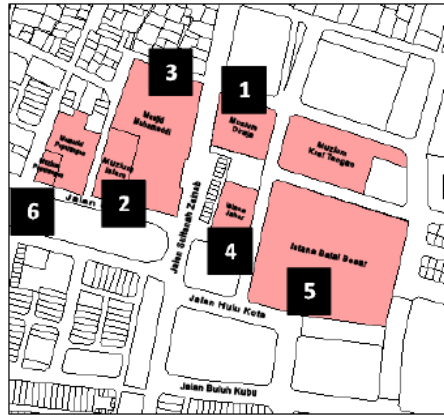


Figure 12 : Location of Grade 1, Grade 2 and Grade 3 Buildings



1. Muzium Diraja

2. Muzium Islam



3. Masjid Muhammadi

4. Istana Jahar



5. Istana Balai Besar

6. Muzium Peperangan

Figure 13 : Grade 1 buildings locations



Figure 14 :Grade 2 buildings locations

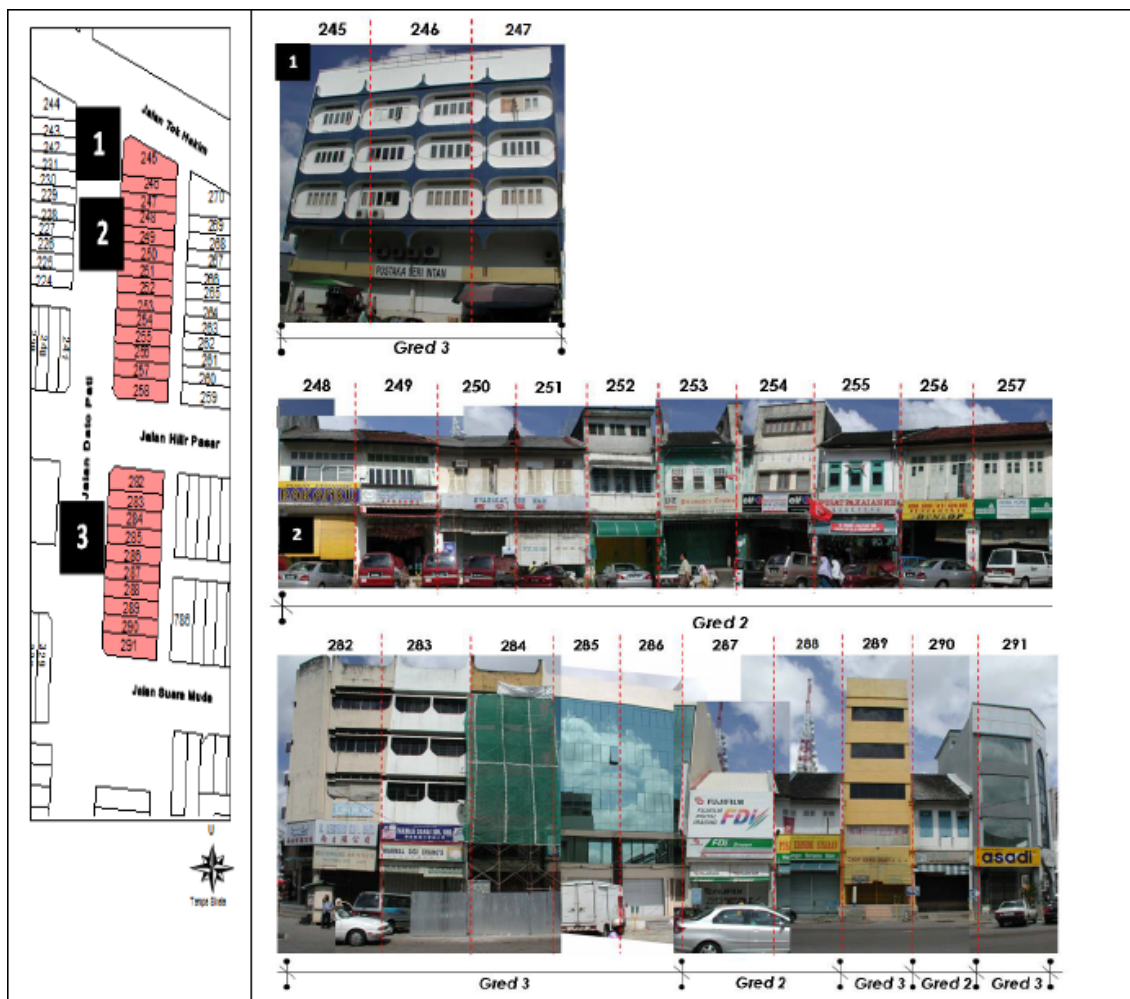


Figure 15: Grade 2 & 3 locations

12.0 Conclusion

The architectural interventions in Kota Bharu have been analyzed particularly in the heritage zone which is the built-heritage as the main focus. As time passed, the expansion and alteration has become a necessity due to urban demand and needs of the community. Lacking of awareness and proper guideline by authority and building's owner in constructing and renovating the existing heritage buildings have created a massive impact to the building heritage façade and streetscape itself. Hence, the transformation of urban setting of a township due to urban development has been a crucial issue which should be overcome. Proper proposition and guideline in developing and altering the existing heritage building shall improve the effort to sustain and preserve the originality of historical elements of the urban setting including existing intrinsic heritage building massing of the study area.

References

Ahmad. A (2008), Heritage Conservation. <http://www.hbp.usm.my/conservation/> Retrieved November 9, 2012

Ahmad, Y (2006). *The Scope and Definitions of Heritage: From Tangible to Intangible*. *International Journal of Heritage Studies* 12(03), 292-300.

Badaruddin. M, Dr. A. Ghafar. A and Nurwati. B (2008). *Challenges of Historic Cities in the New Millennium: Lessons from Malaysia*. *School of Housing, Building and Planning*, Universiti Sains Malaysia, Pulau Pinang, Malaysia.

Cantacuzino, Sherban (1989). *A Policy for Architectural Conservation*. *Architectural and Urban Conservation in the Islamic World*. Vol.1. Dhaka, 1989. p. 14. Retrieved November 23, 2012

Chun. H, Hasan. A & Noordin. N (2005). *An Influence of Colonial Architecture to Building Styles and Motifs In Colonial Cities In Malaysia*. *8th International Conference of The Asian Planning Schools Association 11-14th September 2005*, *School of Housing Building and Planning Science University of Malaysia*, Penang Retrieved August 13, 2012

Dr. Lim Mah Hui (2012). *Preservation and Destruction in Penang's Development* Retrieved August 12, 2012

Holl. S (2013). *The Brooklyn Rail. Critical Perspective on Arts, Politics and Culture*. Retrieved August 12, 2012

Paillard. C (2006). *The Changing City: Heritage, regeneration and actors: What ways towards an urban*

democracy? Retrieved August 15, 2012

Hicran. T (1996). *Change with/versus Conservation: Architectural Interventions and Their Effects on the Character of the Historic Urban Patterns: A Case Study on Historic Urban Site of Izmit, Turkey.*

Harun. S.N (2005). *Perkembangan Sejarah dan Pengaruh ke atas Senibina di Malaysia: Sebuah Tinjauan Ringkas.* Buletin Perancang, JPBD, UiTM Perak, 2005
Retrieved August 12, 2012

Logan. W (2004). *Museum, Community Identity and Urban Heritage. Keynote Paper presented to the 'Cities and Museum: Local and Global Challenges' Queensland College of Art Auditorium, 22 Grey Street Brisbane, 3 September 2004.*
Retrieved August 11, 2012

MPKB, AJM Planning and Urban Design Groups Sdn.Bhd,(2005) *Kajian Pelan Tindakan dan Garis Panduan Rekabentuk Bandar Kota Bharu Bandar Raya Islam (2005-2015).*

Mohamed.B, Ahmad. A. Ghafar and Izzamir. I (2001), *Heritage route along ethnic lines: the case of Penang.* Retrieved

Mohamed.B, Ahmad.A and Badarulzaman. N (2008). *Challenges of Historic Cities in the New Millennium: Lessons from Malaysia.*

McDonald, S (2011), *Contemporary Architecture in Historic Urban Environments.*

Mohammad Ismail Ibrahim (2011), *The Kelantan Times.*

Najafi (2011). *A Review on the Extent of Urban Design Intervention in Iran's Architectural Structures for Interaction with Architectural Innovation. International Journal Of Architecture and Urban Development.* Vol.1, No.2, Autumn 2011

Pekoglu, B.-a. I, (2005). *An Architectural Evaluation Method For Conservation Of Traditional Dwellings, Building And Environment* 41, 386–394.

Rui.L, (2008). *Urban Heritage Conservation by GIS under Urban Renewal, 44th ISOCARP Congress 2008.*

Russel. I (2007). *Heritage, Identities, and Roots: A critique of Arborescent Model of Heritage and Identity.*

Paper prepared for the Heritage Values: The Past in the Contemporary Society Workshop, November 15th-17th 2007.

Steinberg. F (1996). *Conservation and Rehabilitation of Urban Heritage in Developing Countries*. HABITAT INTL. Vol. 20, No. 3, pp. 463-475, 1996

Sotoudeh.H * Wan Abdullah. W.M.Z (2012). *Affected Variables on Successful Infill Design in Urban Historic Context*. School of Built Environment, UTM.

Siti Norlizaiha. H (2005). *Perkembangan Sejarah Dan Pengaruh Ke Atas Senibina Di Malaysia: Sebuah Tinjauan Ringkas, Artikel diterbit dalam Buletin Perancang, JPBD, UiTM Perak, 2005.*

The Getty Conservation Institute (2009). *Historic Urban Environment Conservation Challenges and Priorities for Action. Experts Meeting, March 12-14, 2009.*

Worskett, Roy (1970). *The Character of Towns. An Approach to Conservation. The Architectural Press.* London, 1970. p.10

Urban Development Authority (Dec 2011), *Conservation Guidelines*, Retrieved September, 2012 from

Urban Development Authority (2013). *Conservation Guidelines*. Retrieved September 3, 2012

Whangarei District Plan (2012). *Part C – Policies – Heritage Buildings, Sites and Objects*.

Zainal Abidin. A, (2011). *Masalah Dalam Pemuliharaan Bangunan Warisan Di Malaysia, Persidangan Kebangsaan Sains Sosial UNIMAS 2011: Pembangunan ke Arah Masa Depan yang Mapan 20-21 April 2011, Universiti Malaysia Sarawak.*

“Architecture” In Oxford Dictionaries Online. Retrieved 14th September 2013 from <http://oxforddictionaries.com/definition/english/architecture?q=architecture>

http://www.ura.gov.sg/uol/guidelines/conservation/Conservation%20Guidelines/~/_media/User%20Defined/URA%20Online/Guidelines/Conservation/Cons-Guidelines.ashx